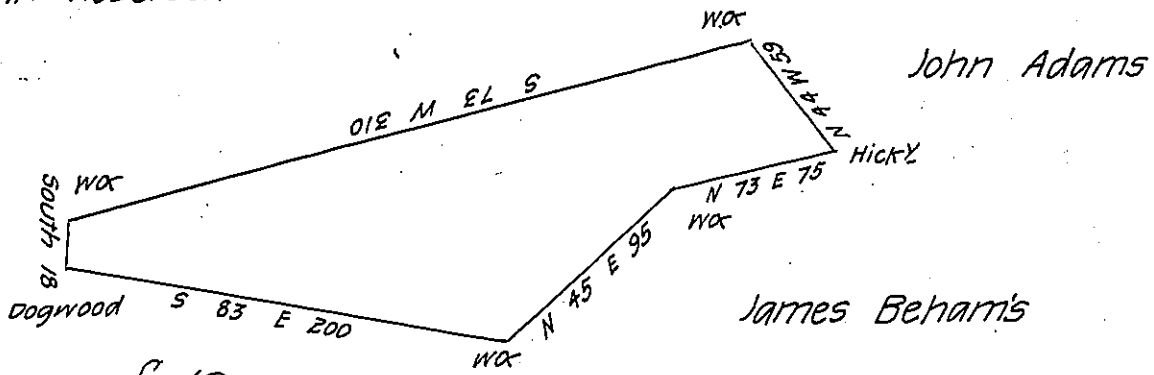


John Roberson



John Adams

James Beham's

C 192 - 231

John Donnelly

The above is the draught of a survey made made 20<sup>th</sup> April 1797 in pursuance of a warrant granted Tho<sup>s</sup> Robison on the 18<sup>th</sup> of March 1796. The survey is situate on the waters of Wheeling Creek in Washington County it contains 118 <sup>3</sup>/<sub>4</sub> acres and allowance of six Per Cent and is called pleasant Vale.

Jno Hoge D. S.

Daniel Brodhead Esq<sup>r</sup> S. G.

IN TESTIMONY that the above is a copy of the original remaining on file in the Department of Internal Affairs of Pennsylvania, made conformably to an Act of Assembly approved the 16th day of February, 1833, I have hereunto set my Hand and caused the Seal of said Department to be affixed at Harrisburg, this eighteenth day of March 1907.

*Samuel J. Brown*  
 Secretary of Internal Affairs.